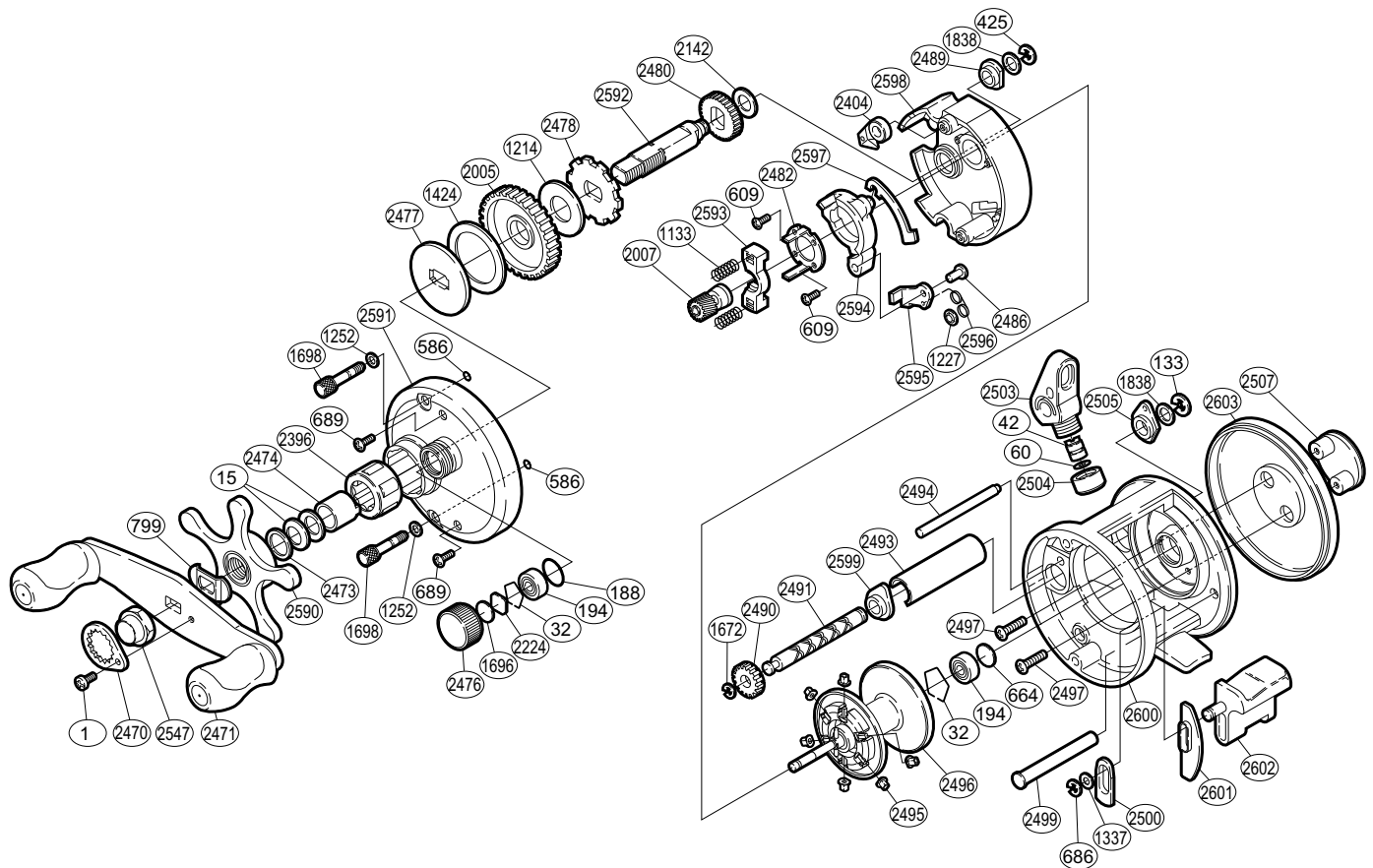


# SHIMANO®

## CARDIFF®

### CDF-101



BNT No.	PARTS NAMES	BNT No.	PARTS NAMES	BNT No.	PARTS NAMES
BNT0001	Handle Nut Plate Screw	BNT1838	Worm Shaft Spacer	BNT2497	ID Plate Screw
BNT0015	Drag Spring Washer	BNT2005	Drive Gear	BNT2499	Clutch Bar Support
BNT0032	Bearing Retainer	BNT2007	Pinion Gear	BNT2500	Clutch Bar Guide (A)
BNT0042	Line Guide Pawl	BNT2142	Idle Gear (A) Spacer	BNT2503	Line Guide
BNT0060	Spacer (optional)	BNT2224	Spool Tension Spacer (A)	BNT2504	Pawl Cap
BNT0133	Worm Shaft Retainer	BNT2396	Roller Clutch Bearing	BNT2505	Worm Bushing (B)
BNT0188	"O" Ring	BNT2404	Anti-Reverse Pawl	BNT2507	Right Side ID Plate
BNT0194	Ball Bearing	BNT2470	Handle Nut Plate	BNT2547	Handle Nut
BNT0425	"E" Lock	BNT2471	Handle Assembly	BNT2590	Star Drag
BNT0586	Bolt Retainer	BNT2473	Star Drag Spacer	BNT2591	Left Side Plate
BNT0609	Clutch Cam Screw	BNT2474	Roller Clutch Inner Tube	BNT2592	Drive Shaft
BNT0664	Spacer (B)	BNT2476	Cast Control Cap	BNT2593	Yoke
BNT0686	"E" Lock	BNT2477	Key Washer	BNT2594	Clutch Cam
BNT0689	Set Plate Screw	BNT2478	Anti-Reverse Ratchet	BNT2595	Clutch Pawl
BNT0799	Friction Washer	BNT2480	Idle Gear (A)	BNT2596	Clutch Pawl Spring
BNT1133	Yoke Spring	BNT2482	Clutch Cam Retainer	BNT2597	Clutch Plate
BNT1214	Drag Washer (A)	BNT2486	Clutch Pawl Pin	BNT2598	Set Plate
BNT1227	Clutch Pawl Spring Retainer	BNT2489	Drive Shaft Bushing	BNT2599	Worm Bushing (A)
BNT1252	Left Side Plate Bolt Washer	BNT2490	Idle Gear (C)	BNT2600	One-Piece Frame
BNT1337	Clutch Bar Support Spacer	BNT2491	Worm Shaft	BNT2601	Clutch Bar Guide (B)
BNT1424	Drag Washer (C)	BNT2493	Level Wind Guard	BNT2602	Quick-Fire II Clutch Bar
BNT1672	"E" Lock	BNT2494	Level Wind Guide	BNT2603	Right Side Plate
BNT1696	Cast Control Spacer (B)	BNT2495	Brake Collar		
BNT1698	Left Side Plate Bolt	BNT2496	Spool Assembly		